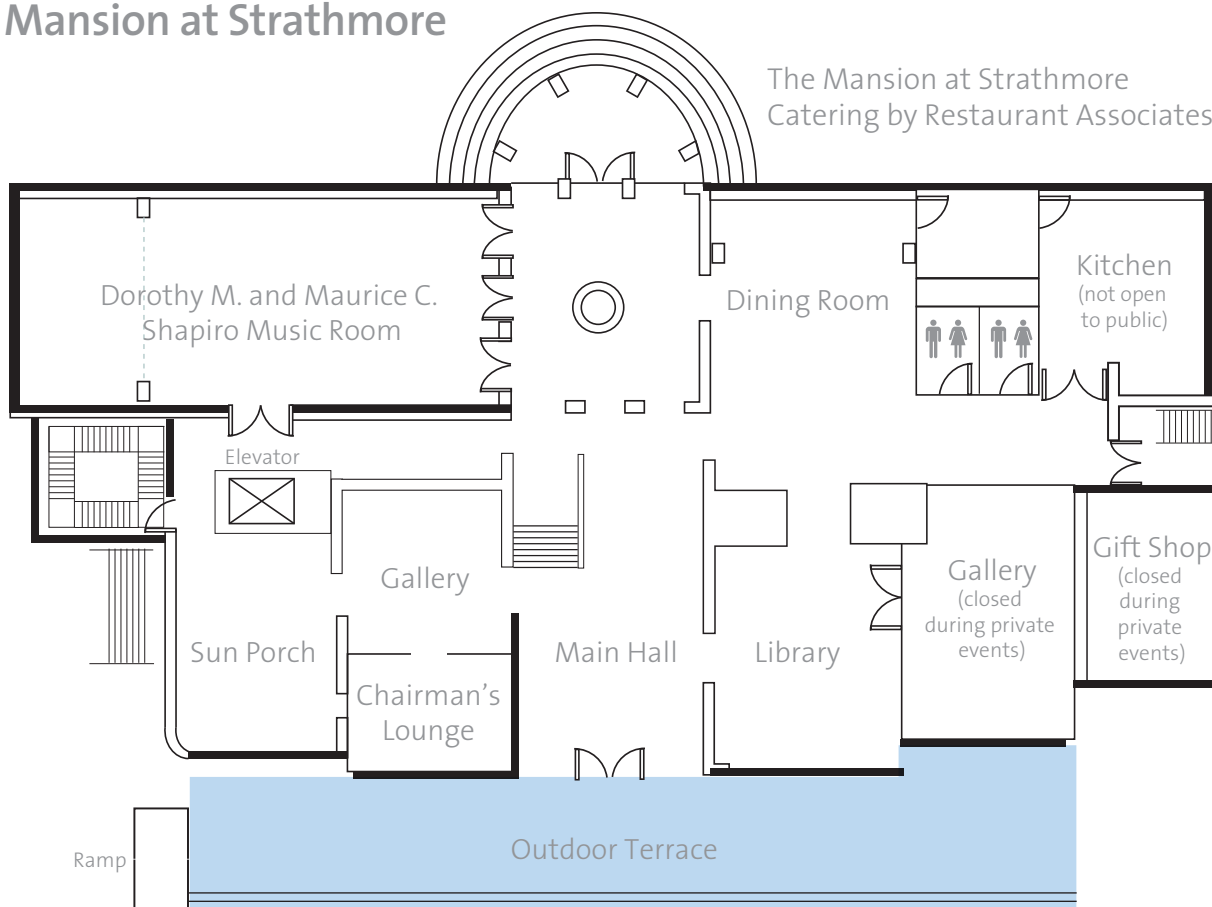


events

The Mansion at Strathmore

The Mansion at Strathmore
Catering by Restaurant Associates



MAIN FLOOR LAYOUT

The Strathmore Wedding

It's hard to imagine a more beautiful setting for a wedding — a magnificent Georgian mansion set high upon a hill, surrounded by centuries-old trees, flowering shrubs and perfectly manicured lawns... and inside, marble and polished oak, glittering chandeliers, gleaming brass fixtures, towering Palladian windows, and a sweeping staircase that just begs for a bridal procession. Small wonder, then, that The Mansion at Strathmore has been the choice for hundreds of couples for their dream weddings.

During an 8-hour rental, your event is the only one taking place in the Mansion. Rentals include the use of the 2nd floor bridal suite with full length mirrored walls, and the beautiful bridal bathroom featuring turn-of-the-century marble fixtures.

Private Events

The Mansion at Strathmore is a unique venue for small corporate meetings, private concerts, fundraising events, holiday parties, and retreats. This turn-of-the-century Georgian mansion has been a warm and welcoming host to hundreds of private events and has many unique spaces available for rental.

Capacity

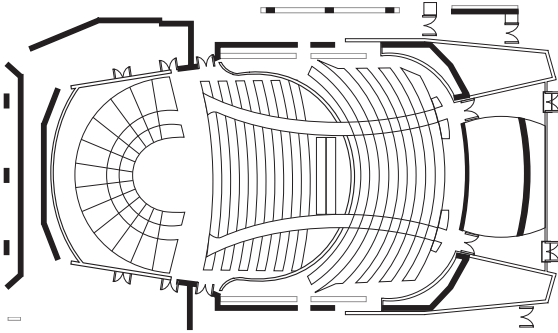
	Seated Dinner/ Meeting	Standing Reception	Auditorium Style
Mansion at Strathmore (all spaces)	150	225	
Dorothy M. and Maurice C. Shapiro Music Room	70		110
Lockheed Martin Conference Room (2nd floor)	20		
Library	20		
Sun Porch	25		

The Mansion lawn may be tented to increase capacity.

events

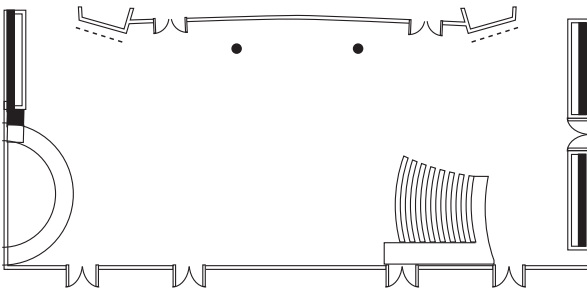
The Music Center at Strathmore

1



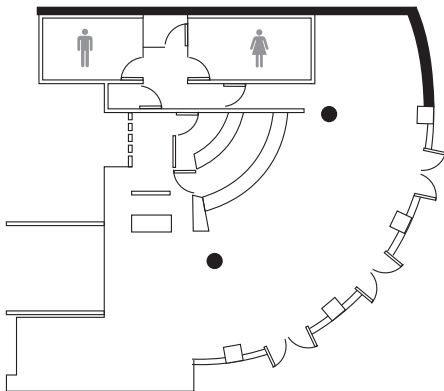
1 CONCERT HALL Designed by William Rawn Associates Architects Inc, acousticians Kirkegaard Associates, and Theatre Project Consultants-the same team designed the Ozawa Hall at Tanglewood-the Concert Hall features state-of-the-art adjustable acoustics making it pitch perfect for non-amplified events and tunable for amplified pop, folk, jazz, blues, and world music. A sprung dance floor and wide-hinged wing doors make the space wonderful for dance. With stained white birch and bronze metal grillage walls, maple floors, clear maple aubergine velour seats, and red birch accents, the Concert Hall is visually stunning while feeling warm and inviting at the same time.

2

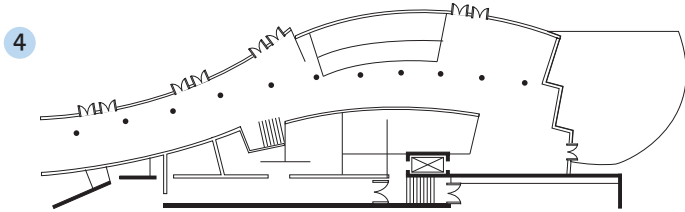


2 LOCKHEED MARTIN LOBBY The soaring 65 foot high fritted glass curtain wall in the Lockheed Martin Lobby looks out onto green wetlands by day, and reflects light in the evenings to form a beautiful intricate pattern. Serving as the main entry point to the Concert Hall on the orchestra level, there are two other adjoining lobby areas at the Promenade and Grand Tier levels which overlook this magnificent space. Doors at the orchestra level open up to an adjacent outdoor terrace, which may be tented for private events. Natural stained maple and moss-colored carpeting bring warmth to the space, while two-story high torchieres accent the sweeping roofline. Striking built-in bars with granite countertops serve the Orchestra and Grand Tier Levels, with three portable bars available for additional service.

3

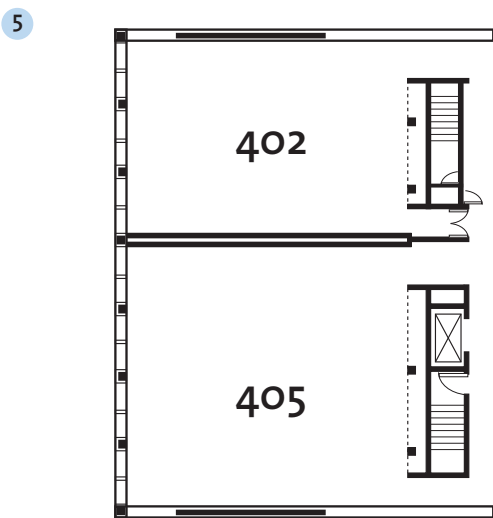


3 COMCAST CIRCLES LOUNGE Immediately adjacent to the Lockheed Martin Lobby, this private reception room is perfect for intimate gatherings. The curved shape of the room reflects the arc of the roofline, and the warmth of the wood and moss green carpeting from the Lockheed Martin Lobby carry through into the lounge. A curved glass outer wall has doors which open to the outdoor terrace. Normally furnished with a mix of couches and small cocktail tables, the space may be used as is, or transformed to a banquet-style reception area. A private curved bar with a granite countertop services the Comcast Circles Lounge.



4 THE GAZETTE PROMENADE AND PRELUDE CAFÉ.

Serving as the “main street” of Strathmore, the Gazette Promenade leads to the Lockheed Martin Lobby and houses the Prelude Café and Music Center Shop at Strathmore. The 200-foot-long covered arcade gracefully curves along the west side of the building. The bright and sunny space features cream colored tile floors and outer walls made of floor to ceiling fritted glass, literally inviting the outside in. Doors open onto the Bou Family Terrace that can be used for additional seating.



5 CHORAL REHEARSAL ROOM 405 AND ORCHESTRAL REHEARSAL ROOM 402.

These two dramatic two-story high rehearsal rooms feature beautiful tongue and groove hardwood floors, colorfully painted walls with tan fabric wrapped acoustic panels, and unique dramatic lighting fixtures. 22 foot high windows bathe the rooms in light while accenting the curved ceilings.

CAPACITY	SEATED	RECEPTION
Concert Hall	1976	NA
Lockheed Martin Lobby	250	400
Outdoor Terrace	400	600
Promenade Tier Lobby	90	150
Grand Tier Lobby	80	100
Comcast Circles Lounge	70	125
The Gazette Promenade and Prelude Café	360	500
Choral Rehearsal Room 405	220	250
Orchestral Rehearsal Room 402	150	200